

# GO SOME ELECTRICAL



# Welcome To GoSome



GoSome Electrical has built a strong reputation as a trusted electrical contractor, delivering high-quality commercial installations across the UK. With a skilled and experienced team, the company specialises in commercial fit-outs and shopfitting projects, consistently meeting the demands of leading developers and M&E companies.

With over four decades of experience, GoSome Electrical has grown on three core values: speed, quality, and reliability. This commitment has established long-standing client partnerships and a respected presence within the commercial contracting sector.

Headquartered in the North West of England, the company operates with a fully mobile workforce, ensuring nationwide delivery of projects with professionalism, efficiency, and consistency.



## WHY COMPANIES CHOOSE US?



### 40+ years experience

For over 40 years, our family-owned business has delivered trusted electrical solutions with expertise, reliability, and innovation offering cost-effective services tailored to every need.

### High Quality of work

We've built a reputation for excellence, delivering high-quality work that ensures every project meets the highest standards and exceeds client expectations.

### National Capability

We have established national teams, ensuring we provide a local service nationally.

### Flexible solutions

Our team undertakes small works or entire electrical installations, offering both labour-only or supply and fit programs.



# Our Services



## Shop Fitting

GoSome offers bespoke shopfitting, electrical installations, including full-fit out, lighting, and display installations. We understand the necessity to deliver electrical installations on time with exceptional quality. Across our team we offer both day and night working services.

## Commercial Fit-Outs

Our commercial project capability includes shell and core, Cat A and Cat B fit-outs of schools, offices, and leisure centres, including data, fire alarms, access control and BMS installation with full installation and commissioning included in our fit-out packages.

## Maintenance Contracts

Have an electrical maintenance emergency or need? We work with multiple companies nationally, undertaking a range of small works on emergency and planned maintenance agreements.

## EICR's

We provide thorough Electrical Installation Condition Reports (EICR) along with any necessary remedial corrective works. Our detailed reports help you understand the state of your electrical systems and ensure compliance with safety regulations.

# Additional Services



## Fire Alarms

Our team offers various fire alarm panels suitable for L1 and L2 installation. We offer BAFE services, working alongside your fire strategy to design and install the best-in-class fire alarm system.



## EV Chargers

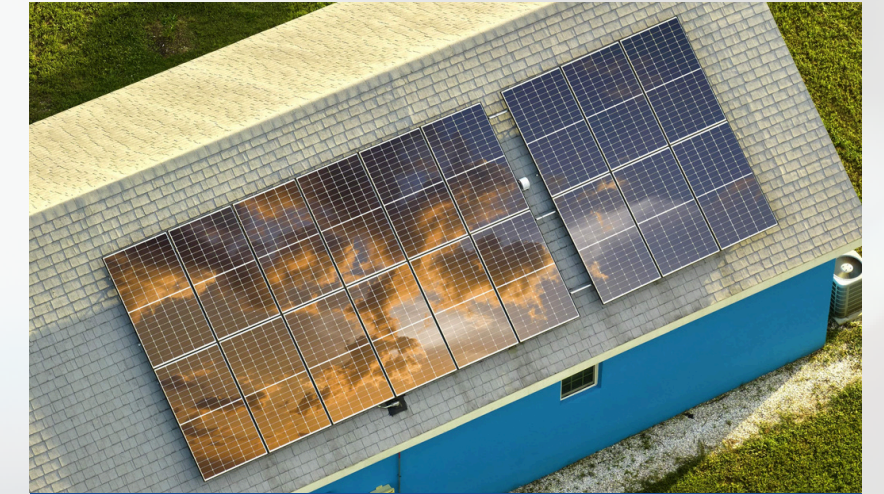
We install a variety of EV charger brands and offer extended servicing and maintenance contracts. Our teams are specialist EV Electricians who work around the clock to keep electric cars moving.



## Structured Cabeling

We offer CAT5 and CAT6 cabling as well as data point installations. Our previous projects include, but are not limited to :

- Offices
- Schools
- Retail / Shops



## Solar PV

Solar PV Installers providing safe, efficient and quality Solar power installations.

# Fit-out project example

**Client:** Go Outdoors

**Location:** Bury

**Project Value:** £180,000

**Duration:** 25 weeks

## Details:

- Shell and Core
- New Mains Distribution including MCCB Panels
- Full rewire
- Data CAT6 installation throughout
- First and Second Fix
- All containment
- Testing and inspection



# New VRF units and panel boards project

**Client:** Mountain Earth / CBRE

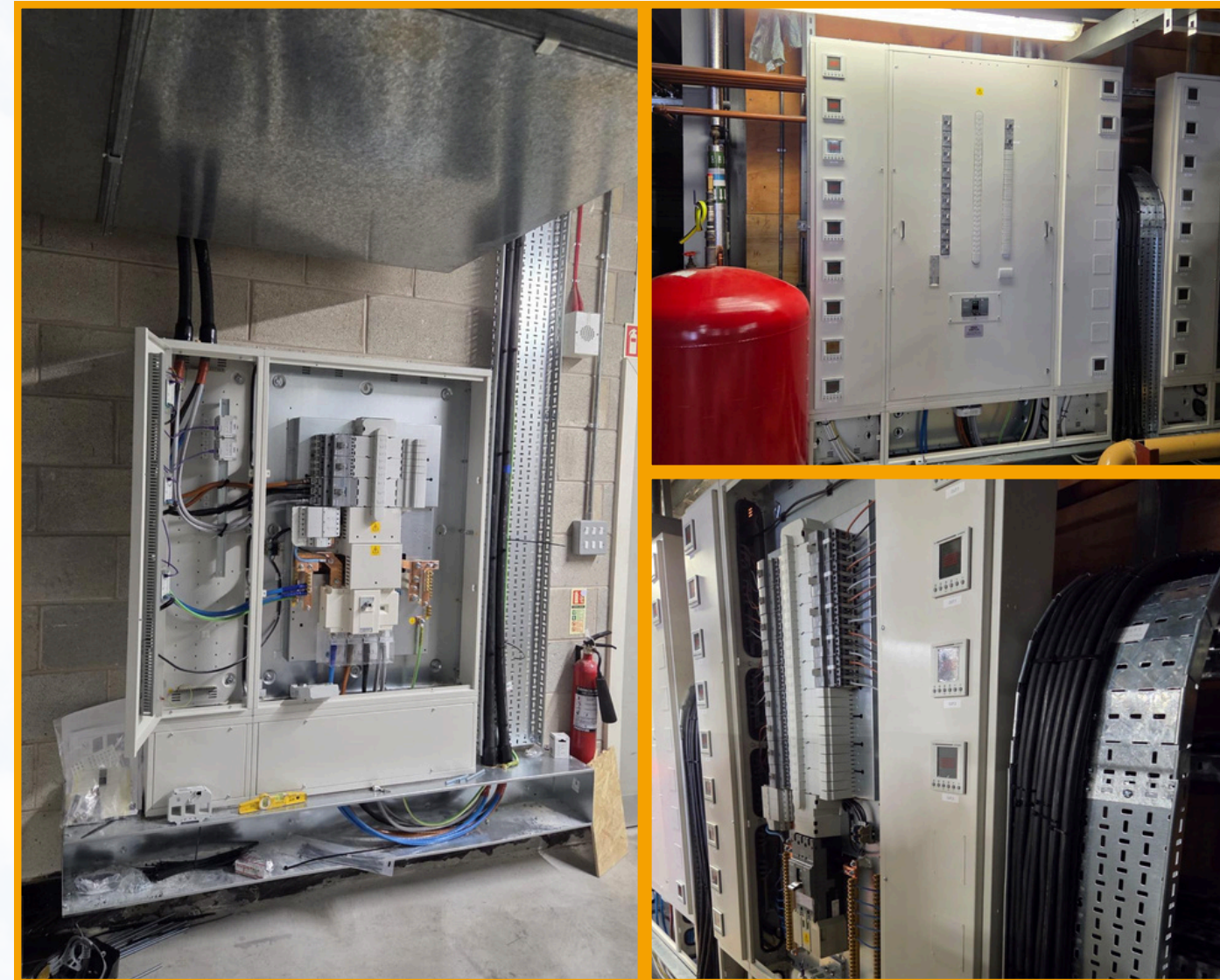
**Location:** Home office, Liverpool

**Project Value:** £27,000

**Duration:** 5 weeks

## Details:

Project included containment of new SWA cables to feed panels, SWA cables to VRF units on the roof.



# Lamp post upgrade project

**Client:** Praxis

**Location:** Pride Park Derby

**Project Value:** £18,000

**Duration:** 2 weeks

## Details:

This project involved replacing existing lamp post tops with modern LED units. Using a cherry picker, we rewired from the cut-out to the new tops and installed upgraded 3-amp fuses. We delivered this program of works as part of our ongoing service and installation contract with Praxis.



# CONTACT US

## Phone

01257 438558

## Email

Electrical@gosome.co.uk

## Website

[www.gosome-ltd.co.uk](http://www.gosome-ltd.co.uk)

## Head Office

254 Eaves Lane, Chorley, United Kingdom, PR6 0DZ

**GO**SOME  
ELECTRICAL

